



The Lifeshield IPS system is fully compliant with NHS Estate Guidelines and HTM 63 panel specifications. Easy to specify and install, Rearo's Lifeshield ensures a sanitary and professional fit within healthcare environments.



lifeshield

Carefully designed in conjunction with leading healthcare professionals and contractors, the Lifeshield IPS System (Integrated Panel System) provides a bespoke, yet easy to specify, solution. Perfect for hospitals, healthcare centres and doctors surgeries, the Lifeshield system is tough, durable and hygienic.

Postformed for easy cleaning and dust control, the design of the panel assists with decontamination and infection control. Available in a choice of 18 decors, the Lifeshield IPS System comes in an exciting range of contrasting colours, each from the leading Formica range of HPL. Offering high visibility and tonal contrast, our designs are in direct accordance with the Disability Discrimination Act (DDA).



Imagery displaying laminate access panels which are available as a bespoke request from Rearo's Commercial department



Full Height, U-Shaped Unit

The U-Shaped Unit is the standard Lifeshield model. Designed to be applied parallel against a wall, the 3000mm structure is designed to conceal plumbing features in a traditional box like structure.



Lifeshield IPS is created in both full and half height variations, fabricated using 18mm MR grade medite MDF and lipped with 2mm colour matched PVC edge for hardwearing impact resistance.



Half Height IPS Unit

Designed to conceal WC facilities, the half height Lifeshield model stands at 1280mm high with a sloped top to the unit. As well as serving an aesthetic purpose, this feature prevents the use of the product as a storage facility and discourages contaminants such as dust to lay.



Full Height, L-Shape Unit

The second variation of full height model is the L-Shape Unit. Traditionally placed in corner areas, the L-Shape model allows for a unit to be poised in between two adjacent walls where space is restricted or of concern.



Dusty Jade



China Blue

Wash Trough

Ideally suited for surgery preparation areas, Rearo's Lifeshield IPS takes into consideration distinctive requirements which allow for a hospital's infrastructure to run efficiently. Pictured right is a cleaning station setting with a corrosion resistant stainless steel wash trough option which can be complimented with matching dispensers and accessories.



Rearo also offers a bespoke Solid Surface service and can create wash troughs and hand basins which are clean in appearance, reducing regular maintenance and cleaning times. Available in various styles and lengths to suit individual site requirements, Solid Surface wash troughs offer a high quality alternative to the more traditional stainless steel option.



Lifeshield Shadow Gap Panel Specification	
Height	3000mm / 1280mm
Width	800mm – U Shape / 950mm – L Shape
Thickness	20mm
Substrate	18mm Medite MR MDF
Face	Lifeshield velour laminate
Compensator	White compensator
Edge Details	Profiled vertical edges
Fire Rating	Class 2 (FR Class 1 or 0 upon request)

Lifeshield Access Panel Specification	
Height	385 / 640 / 1000mm
Width	700mm wide
Thickness	13mm
Substrate	Lifeshield compact grade laminate
Face	Lifeshield nominated colour
Compensator	n/a
Edge Details	Profiled all edges
Fire Rating	Class 2 (FR Class 1 or 0 upon request)

HINGED IPS

Lifeshield is also available with a hinge system fitting, designed for opening IPS duct access panels, either vertically or laterally, while leaving no visible fixings on the face of the panels. Users can access vital plumbing services behind the concealed panels with the use of suction lifters, reducing any risk of damaging the IPS panels.

This hinge system is easy to install on site by any competent tradesperson, and features an automatic safe catch and secondary safety pin to eliminate the risk of injury to the operator. Panels are also available with a range of options to hold the panel closed or locked for authorised access only.

To view the Hinged IPS panel in operation, please use a mobile device to scan the QR code opposite, or visit our YouTube channel 'Rearo TV'.



SKIRTING

Skirting of both the L / U shaped units is planted on the floor and fixed using angle brackets. A curved flooring option applied as an additional layer and secured tightly to help prevent bacteria growth when floors are mopped.

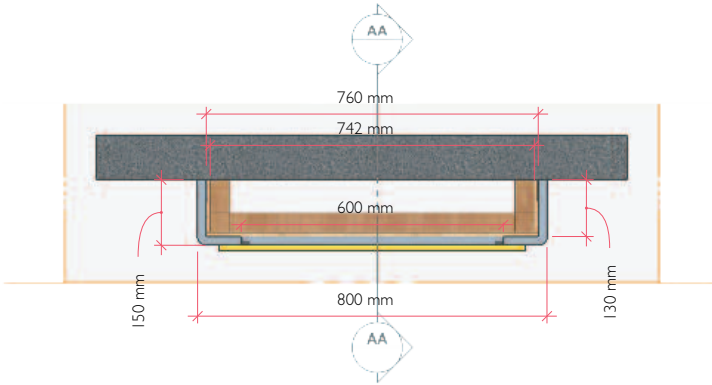
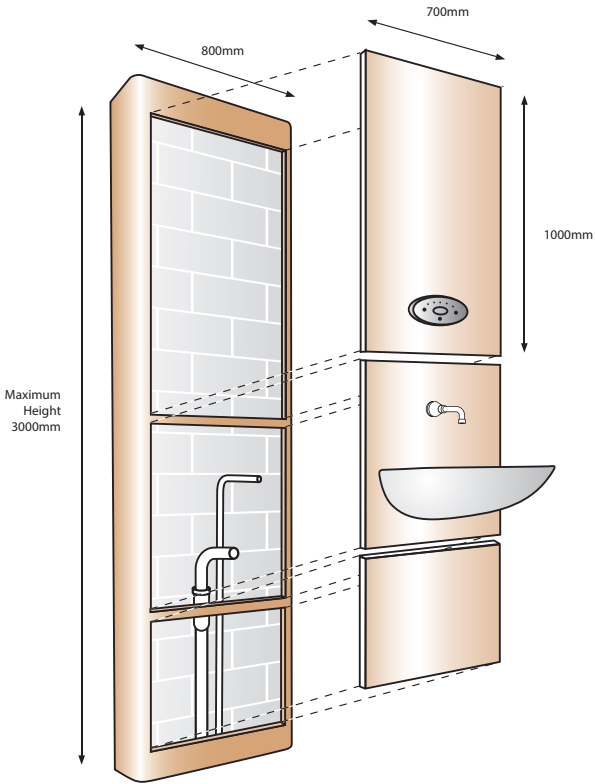


UK MANUFACTURING

Manufactured in Glasgow within a modern 60,000 sq ft factory, Lifeshield utilises the very latest laminate fabrication technology, including advanced CNC machinery.

The combination of skills, experience and investment in the latest equipment ensures that every product is made to the highest standards possible within our 60,000 sq ft Glasgow factory. Our dedicated fulfilment centre allows us to make sure that all items are always in stock (specified colours only) – ready for a speedy delivery direct to your door.

We strive for quality and safety during all aspects of manufacture. We have ISO accreditations for Health & Safety, Quality Management and Environmental Management.



Lifeshield by Rearo adopts complementary colours from leading ranges within the Rearo family, tailor made to suit clinical environments.

With varying hues of blue and grey, including woodgrain textures, the range allows for contrasting Shadow Gap and Access Panel choices to meet DDA requirements.

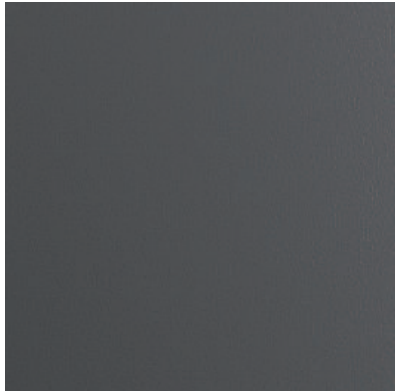
ACCESS PANEL COLOURS



Rural Oak
F8853



Delano Oak
F8966



Storm Grey
F7912



Soft White
F7949

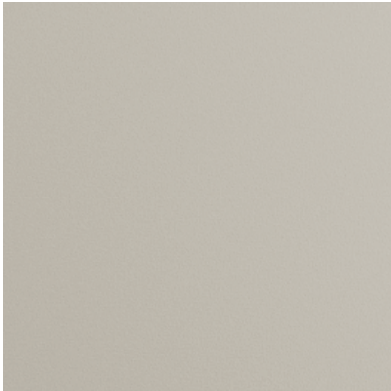


Xenon
F0193

For bespoke options, over 150 decors can be selected from Formica Group's range of high pressure laminates and can be produced as a made to order item. Lead times vary.



China Blue
F7884



Antique White
F7932



Dusty Jade
F7879

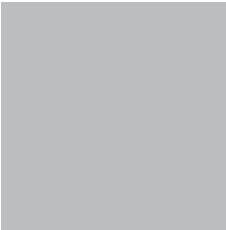


Chene de Meymac
D018

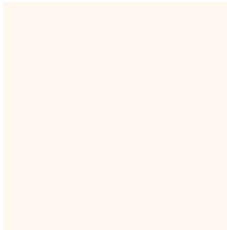


Maryland Fonce
M003

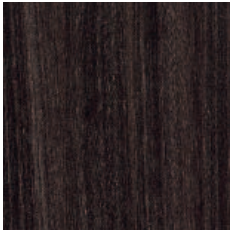
SHADOW GAP COLOURS



White
F0949_Matte58



Magnolia
F1534_Matte58



Blackened Legno
F8848



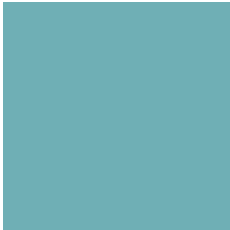
White Ash
F8841



Tornado
F1535_Matte58



Storm
F7912_Matte58



Maui
F5347_Matte58



Folkestone Limewood
F7927_Matte58

Disclaimer: Please note that the colours shown are a printed representation and we cannot guarantee accuracy. Please request samples for full colour accuracy.



lifeshield
INTEGRATED PLUMBING SYSTEMS

REARO
COMMERCIAL SURFACES

For further information on the Lifeshield IPS System or other healthcare products, please email commercial@rearo.co.uk or call our Glasgow office on **0141 440 0800**.