

clixeal

vinyl flooring

REARO®



Luxury, hard-wearing click vinyl flooring for your home



- > Water resistant
- > Stain resistant
- > Hard-wearing
- > Anti-bacterial coating
- > Easy installation click and lock

Traditional Vintage Oak



Smoked Ash

Clixéal offers a hard-wearing click vinyl flooring solution, suitable for every room in your home

Clixéal creates a new benchmark for Vinyl flooring. Benefits including easy click installation, water resistance and an antibacterial coating make Clixéal the perfect alternative to solid flooring.

With 8 decors to choose from in either a contemporary tile effect or traditional timber plank effect, Clixéal will provide a low maintenance, stylish finish to your home or business.



Clixreal is water resistant and ideal for kitchens & bathrooms

Clixreal offers impressive sound insulation, a high floor load capacity and a realistic, natural appearance.

A range of finishing trims are available, providing a secure installation and perfect look.

Clixreal's easy click installation means it can be installed by most DIY enthusiasts.



Black Slate

Antique White Oak





Copper Slate

Commercial Grade

Clixéal flooring is the ideal solution for use in businesses such as hair salons, dentist surgeries, cafes and offices.

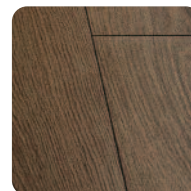
Rated Class 34, Clixéal Flooring is hard-wearing, robust and comes with the Rearo 10 Year Guarantee.



Clixéal Planks



Natural Oak



Traditional Vintage Oak



Smoked Ash



Antique White Oak

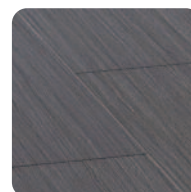
Size 180 x 1220 x 4.2mm planks

1.75 square metres (8 planks) per box

Clixéal Tiles



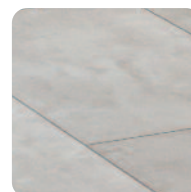
Black Slate



Linear Grey



Copper Slate



Light Concrete

Size 305 x 610 x 4.2mm tiles

1.48 square metres (8 tiles) per box



REARO®

Rearo, Loanbank House, Loanbank Quadrant, Govan, Glasgow, G51 3HZ

Tel: 0141 440 0800 Fax: 0141 445 3342 www.rearo.co.uk sales@rearo.co.uk

Rearo AYR

Unit 42-44
Heathfield Business Park
Boundary Road
Ayr
KA8 9DJ

T: 01292 289 338

F: 01292 261527

E: ayr@rearo.co.uk

Rearo GATESHEAD

Unit 3,
Eastern Avenue Trade Park
Team Valley
Gateshead
NE11 0ZJ

T: 0191 482 2298

F: 0191 482 6245

E: gateshead@rearo.co.uk

Rearo INVERNESS

7 Burnett Road
Longman Industrial Estate
Inverness
IV1 1TF

T: 01463 239918

F: 01463 221130

E: inverness@rearo.co.uk

Rearo SHETLAND

Staneyhill Gas Depot
North Road
Lerwick
Shetland Isles
ZE1 0QA

T: 01595 692807

F: 01595 695469

E: lerwick@rearo.co.uk

Rearo NEWPORT

Unit 14 & 15 Estuary Crt
Estuary Road
Queensway Meadows
Newport
NP19 4SX

T: 01633 283000

F: 01633 283001

E: newport@rearo.co.uk

Rearo ROSYTH

Unit 15 & 16
Primrose Lane
Dunfermline Business Park
Rosyth
KY11 2RN

T: 01383 414000

F: 01383 414400

E: rosyth@rearo.co.uk



INSTALLATION GUIDE



ACCLIMATISATION

Click design floors must acclimatise in the room of installation, or an equivalent area for at least 24-48 hours prior to installation, or until such time as the product has achieved an ambient temperature. Note this is a minimum temperature of 18°C and a maximum of 27°C.

Unpack the flooring and check all planks or tiles in daylight for possible defects or discrepancies in colour.

Stack the plank or tiles in straight piles (must be stacked flat) away from heating, air conditioning or windows with direct intense sunlight. This will achieve a gradual acclimatisation.

PREPARATION

- The floor should be fitted at a room temperature of minimum 18°C/62°F and maximum 27°C/80°F.
- The materials should be acclimatised for a period of 48 hours prior to installation.
- Before installation, check all panels in daylight for possible defects or discrepancies in batch, colour or shine.
- Check that the tongue and groove of the click profile is free from dirt and undamaged.
- For best results mix at least two packs when fitting to avoid repetitions in the pattern. It is also preferable only to use material from the same batch in a single room.
- The surface beneath the floor must be sufficiently prepared (as per below) in advance to guarantee successful fitting of the floor covering. In particular, it must be clean, dry, smooth, firm, level.
- We recommend for one installation you use the same batch as the next batch cannot be guaranteed as an exact match.
- Never sit the flooring upright.

SUBFLOOR PREPARATION

Wood Floors - Wooden subfloors must be stable and solidly fixed; fill all joints and smooth any rough areas. It is recommended that they are then overlaid with minimum 6 mm exterior grade plywood.

Concrete Subfloor - Existing concrete floors must be cleaned of grease, wax and any other foreign or loose matter. Solvents or other chemicals must not be used to remove existing adhesive residues. Unevenness of the subfloor in excess of 3mm over a 3m length must be levelled with an appropriate levelling compound.

It is the installers responsibility to ensure moisture/humidity readings are carried out prior to installation.

Flooring should never be laid where there is a case of direct sunlight or extreme changes in temperature.

Flooring should be broke at doors with the appropriate threshold when running over 6 metres in length.

It is important to maintain a consistent temperature during the life of the product; dramatic changes in temperature can affect the product and should be avoided in order to maintain the serviceability of the product.

Clixreal is backed by our 5 Year Domestic Warranty

This means that for five years, from the date of purchase, your floor will be free from manufacturing defects and will not wear through when installed and maintained according to the instructions supplied with each pack. This guarantee applies only to the original end user and proof of purchase is required for all claims. The guarantee is for replacement or refund of the material only.



INSTALLATION

Different production runs of Clixreal can have slight colour variations between batches. Before starting the installation, it is best to check the batch run which is indicated on the label on the packaging. If you find that you have packaging from different production runs, it is highly recommended that you open each pack and install a mix of planks from each different batch. This will result in a more natural looking floor.

Do not install Clixreal over soft subfloors such as carpet or foam underlayments.

The use of Pull bar and tapping block is recommended to ensure a successful install. The Clixreal sections provide a very tight fit. Proper care must be used to ensure all seams are tight at end of install. An unprofessional installation or use of improper tools can result in damage to the Click profiles.

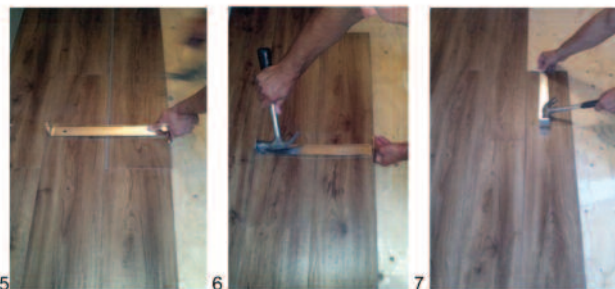
FIRST ROW

Diagram -1 - Start with the first sheet in the left corner of the room allowing for a minimum 5-10mm expansion gap from the wall, groove side facing out from the wall on the length and to the right on the width. Work from left to right.

Diagram -2 - Position the following sheets as an exact extension of the first one.



Cut to fit the last sheet of the row. To do this you can use a utility knife to score the surface at the appropriate point and then break the section over an edge. A laminate cutter or Mitre saw can be used as well.



FOLLOWING ROWS

Diagram -3 - Begin the second row with the cut-off end to start the next and subsequent rows.

Allow at least a 15cm stagger for end seams. For positioning the sections together, starting with the first tile in the row, raise the tile at a 45° degree angle, insert the lengthways tongue into the lengthways groove and lower the section while holding the two together until they are flat and tight together. Close the joint using hand pressure.

Diagram -4 - Lever the next section in place from the front side so that only a very short distance remains for it to be pushed into the lengthways connection.

Diagram -5, 6, 7 - Raise the section slightly and push it into the lengthways tongue, first close to the front connection then the rest. Make sure seams are tight on ends and sides using pull bar or tapping block before proceeding.

Continue the installation to the last row of sheets, as described.

How to shorten door frames: Position a loose sheet face down close to the door frame and cut with a jamb saw.

Upon completion the flooring is immediately suitable to be used. *Nail or screw mouldings to the wall, never to the floor.*

INSTALLATION OVER RADIANT HEATED SUBFLOORS

Rearo do not recommend Clixreal flooring to be fitted over radiant heated subfloors / underfloor heating.

UNDER FLOOR HEATING AND CONSERVATORIES

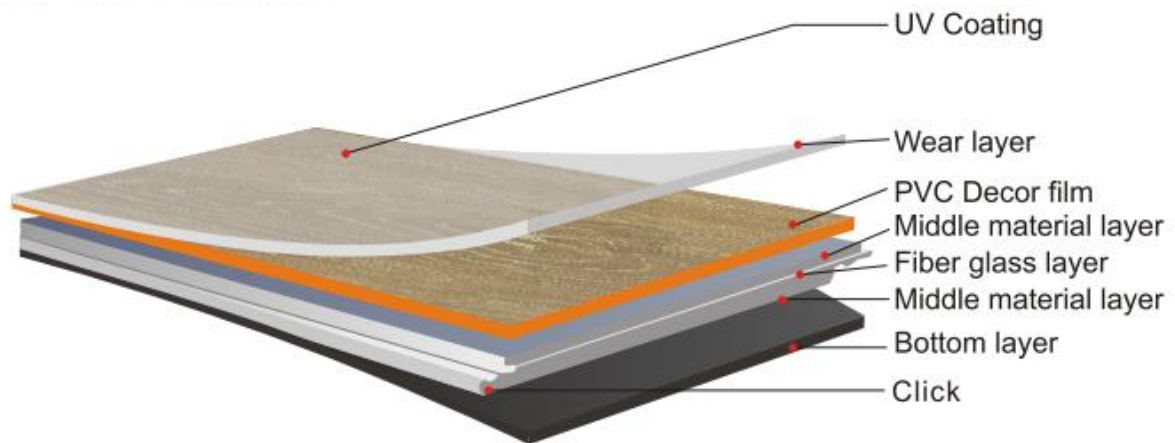
Clixreal is a floating floor system that is not designed to be glued down. Like all vinyl and laminate floating floors, it naturally expands and contracts with changes in temperature - a process called thermal expansion. This is why we recommend a 5-10mm gap be left around all flooring perimeters (usually hidden beneath skirtings or kitchen units.) It is for this reason we do not recommend Clixreal for use in areas which may experience excessive changes in heat such as properties with underfloor heating systems installed or in very sunny conservatories.)

MAINTENANCE

Clean regularly with a damp mop with a vinyl floor cleaner such as HG Vinyl & Linoleum Clean & Shine. Do not use excessive water. Never use solvent based or bleach based cleaning solution on Vinyl flooring.

Always use Chair Protectors under furniture and on chair legs. Teflon protectors are best. Clixreal do not recommend the use of felt pads.

TECHNICAL DATA SHEET



Total thickness	ISO 24346	4.2±0.15mm
Thickness of wear layer	ISO24340	0.5mm
Size tile(L x W)	ISO 24342	1220*180mm/610*305mm
Wear resistance	EN 660-2	pass
Residual indentation	ISO24343	0.05mm
Dimensional stability	ISO 23999	≤0.17%
Resistance to staining	ISO 26987	Not affected
Color fastness to artificial light	ISO 105-B02	ΔE<8/≥Grade 6
Castor chair resistance	ISO 4918	Pass
Reaction to Fire	EN 13501-1	Class Bf1
Slip resistance	EN 13893/ DIN 51130	≥DS/R9
Fungi resistance	ISO 846	pass

REARO LAMINATES LIMITED

Loanbank House, Loanbank Quadrant, Govan, Glasgow G51 3HZ
 Customer Services 0141 440 0800 sales@rearo.co.uk